

# FIRE PROTECTION: WINDOWS

**RATING:** -/120/120

**SYSTEM:** Forster Fuego Light  
Insulated Steel Framing System



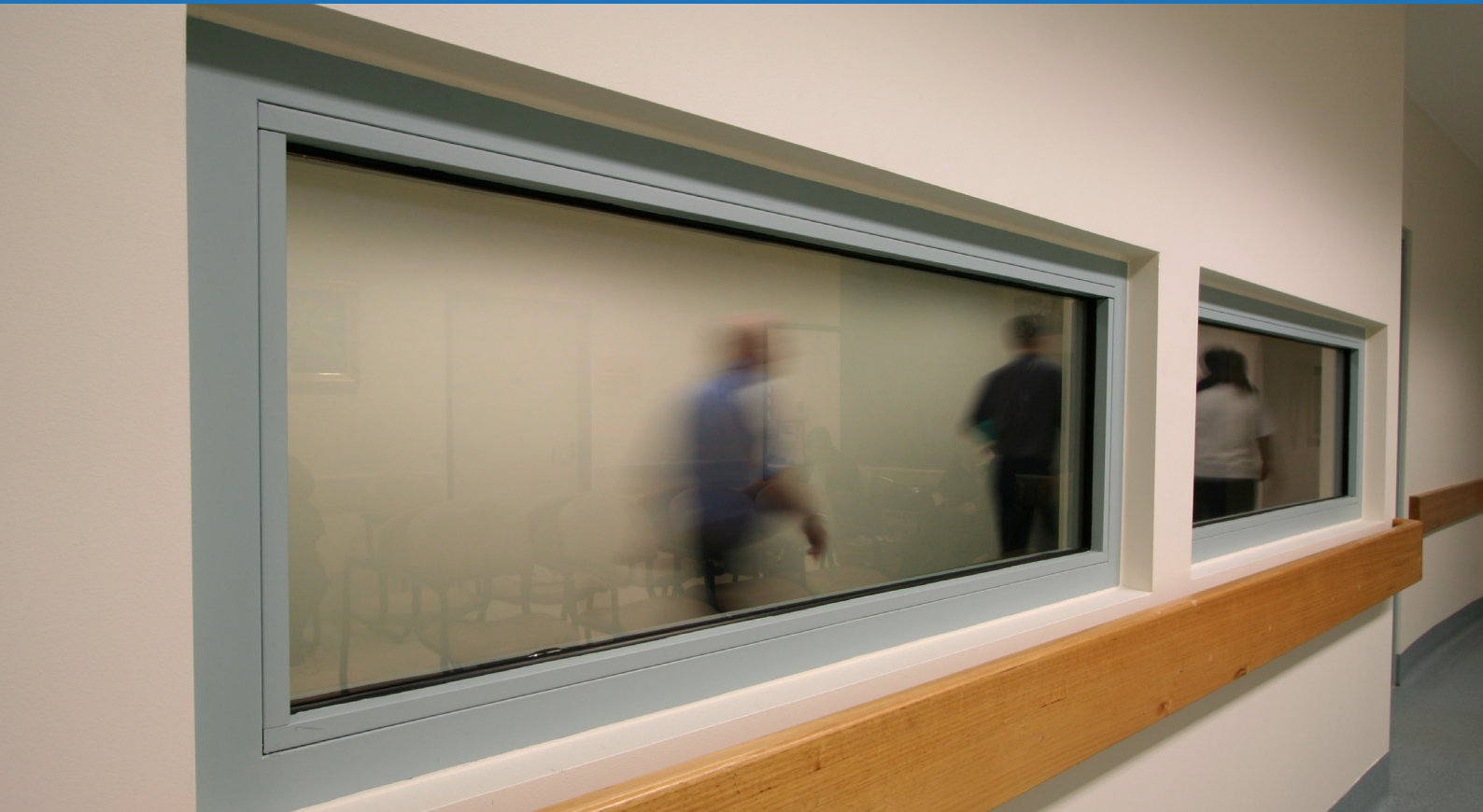
**Incorporating the Forster Fuego Light insulated Steel Framing system combined with Pilkington Pyrostop® fire rated glass, these windows achieve a rating of -/120/120 FRL to AS1530.4**

Highly suited for applications that require windows to provide protection against the spread of flames and full protection of heat transfer for up to 2 hours, whilst retaining the safety and aesthetics of a fully transparent window. Especially suitable for fire escape corridors, fire walls, and protection of essential services equipment.



## FEATURES

- Fixed windows up to 2500 x 1400 for each lite (larger sizes possible on request)
- Fire resistance to -/120/120
- TPS - Forster Fuego Light 110 x 50 steel insulated framing system
- Single and multi-panel applications - unlimited continuous length
- Suitable for internal or external application
- Available in powdercoat or paint finish
- Easily integrated with TPS -/60/30 glazed fire doors
- Excellent U-values
- Very high sound reduction
- Grade A impact rated to AS2208
- Curved heads, angles, circles available
- Triple glazing available for improved energy/shading performance
- System also available as -/90/90, -/60/60, and -/60/30 FRL (contact TPS for more information)
- Suitable for integration with TPS -/60/30 glazed sliding door system (contact TPS for more information)
- Full DWG drawings and architectural support available (please contact TPS for assistance)
- Continuous curtain walls possible using Forster Thermfix Vario fire rated curtain wall system
- Full glass data available from [technicalprotection.com.au](http://technicalprotection.com.au)



## TECHNICAL DATA

Glass	Thickness	FRL	Application	Max visible glass dim (mm)	Max glass pane area (m <sup>2</sup> )	Light transmission	U <sub>g</sub> (W/m <sup>2</sup> K)	SHGC	R <sub>w</sub> (C;Ctr) dB	Weight (Kg/m <sup>2</sup> )
Pilkington <b>Pyrostop</b> <sup>®</sup> PS120-104	52mm	-/120/120	Internal	2376	3.4	75%	2.6	0.65	42 (-1; -4)	108
Pilkington <b>Pyrostop</b> <sup>®</sup> PS120-201	56mm	-/120/120	External	2376	3.4	75%	2.6	0.61	44 (-1; -4)	114

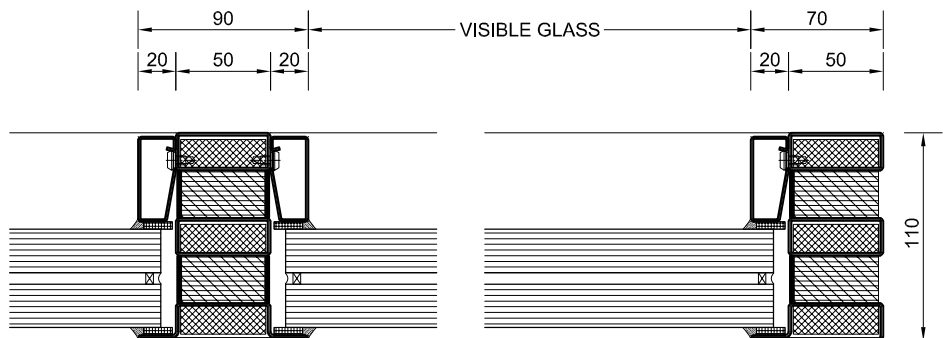
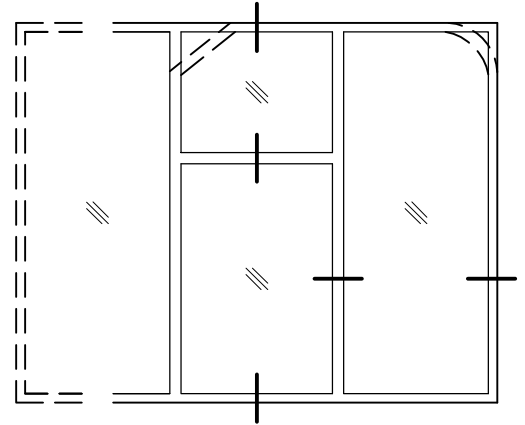
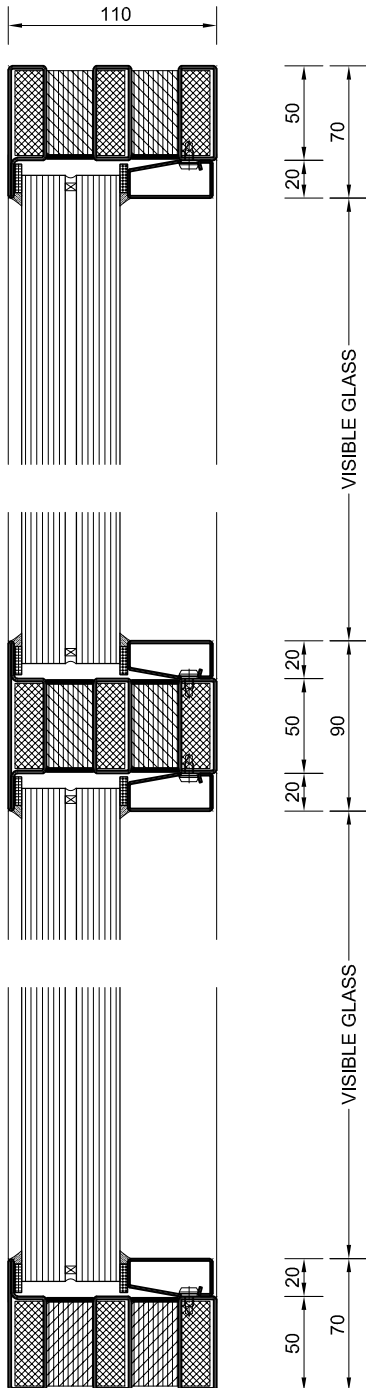
### HOW TO SPECIFY

Glazing to be fully certified TPS -/120/120 window incorporating 52mm (for internal applications) or 56mm (for external applications) Pilkington Pyrostop<sup>®</sup> multi-laminate fire resistant intumescent glazing with Forster Fuego Light fully insulated steel framing system, available via Technical Protection Systems approved distribution network.

Contact Technical Protection Systems Pty Ltd for further information:

W [technicalprotection.com.au](http://technicalprotection.com.au) P 03 9720 1930 E [info@technicalprotection.com.au](mailto:info@technicalprotection.com.au)

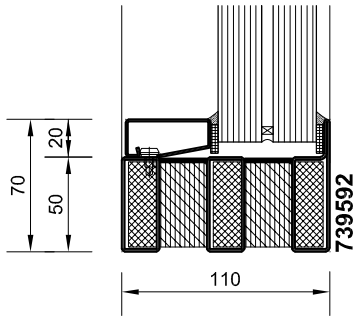
## TYPICAL SECTIONS



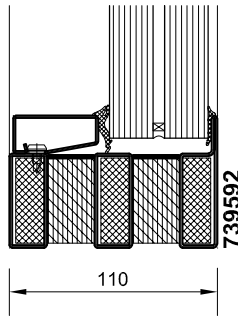
TYPICAL VERTICAL SECTION

TYPICAL HORIZONTAL SECTION

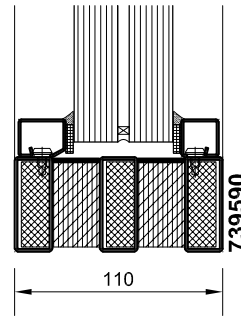
## TYPICAL GLAZING OPTIONS



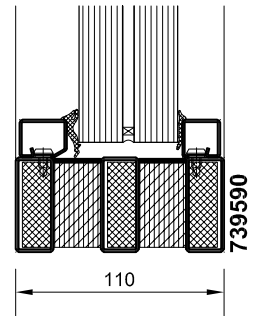
52mm GLASS, WET SEAL  
SINGLE GLAZING BEAD  
INTERNAL USE ONLY



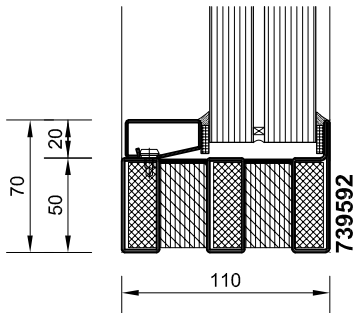
52mm GLASS, DRY SEAL  
SINGLE GLAZING BEAD  
INTERNAL USE ONLY



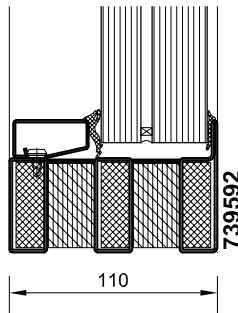
52mm GLASS, WET SEAL  
DOUBLE GLAZING BEAD  
INTERNAL USE ONLY



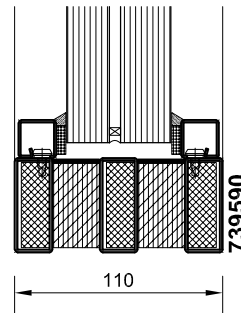
52mm GLASS, DRY SEAL  
DOUBLE GLAZING BEAD  
INTERNAL USE ONLY



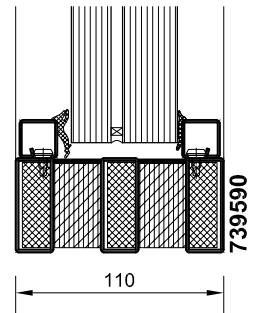
56mm GLASS, WET SEAL  
SINGLE GLAZING BEAD  
INTERNAL / EXTERNAL USE



56mm GLASS, DRY SEAL  
SINGLE GLAZING BEAD  
INTERNAL USE ONLY

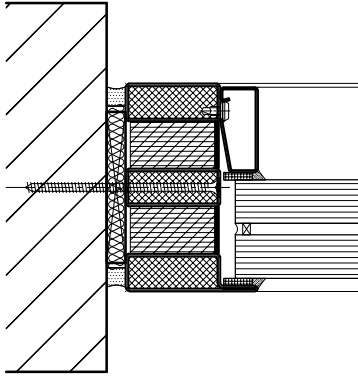


56mm GLASS, WET SEAL  
DOUBLE GLAZING BEAD  
INTERNAL USE ONLY

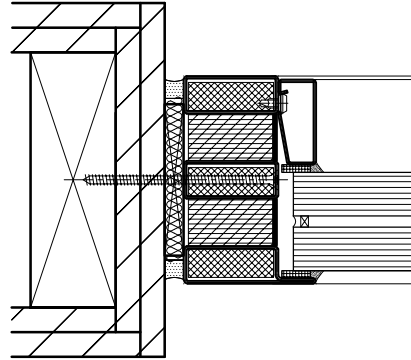


56mm GLASS, DRY SEAL  
DOUBLE GLAZING BEAD  
INTERNAL USE ONLY

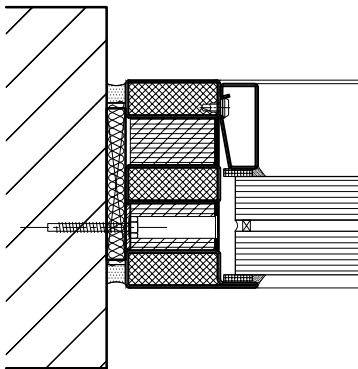
## TYPICAL WALL ABUTMENTS



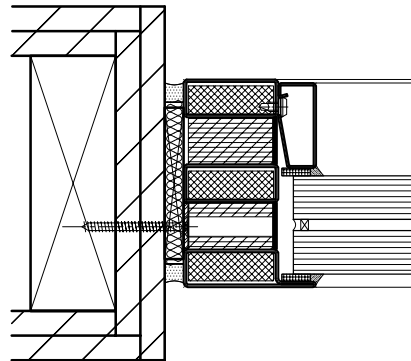
MASONRY WALL



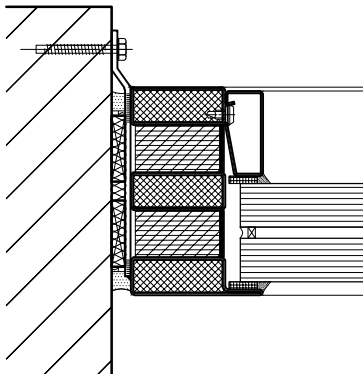
LIGHTWEIGHT FRAME WALL



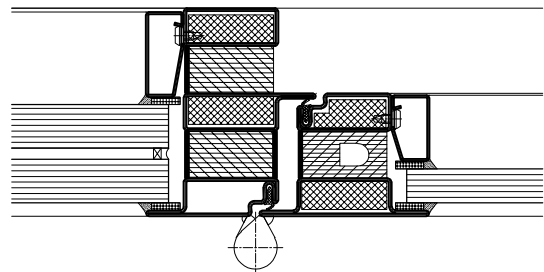
MASONRY WALL



LIGHTWEIGHT FRAME WALL



MASONRY WALL



FUEGO LIGHT HINGED DOOR