

forster

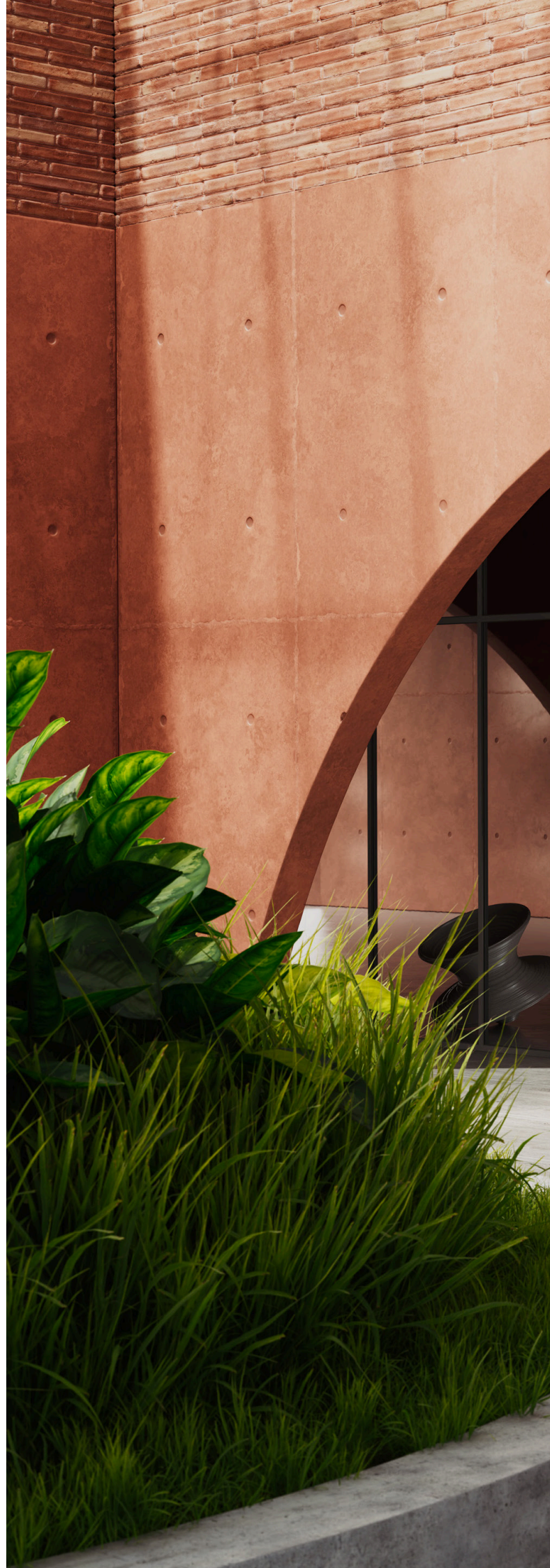
presto xs

## forster presto xs

### Premium door solutions

forster presto xs is not only a treat for design enthusiasts – the slender system for indoor side-hung, pivot and sliding doors also leaves nothing to be desired in terms of appearance and functionality. Face widths of just 23 millimetres enable minimalist constructions with timeless designs and which admit plenty of light and provide a feeling of spaciousness.

The slim profile designs are suitable for both historical and modern room solutions thanks to the wide range of fittings available; they can also be processed quickly and easily with the right accessories. Made from 100% steel, they are also durable, fully recyclable and save resources – for responsible, sustainable construction.



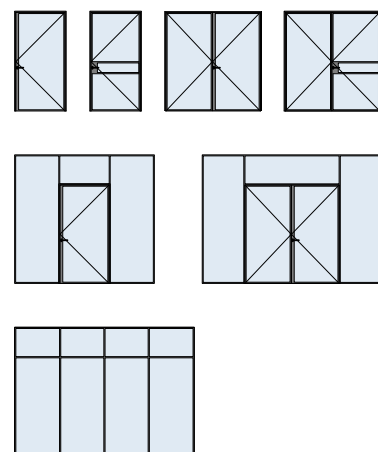


# Side-hung doors with forster presto xs

## Sophisticated design for discerning customers

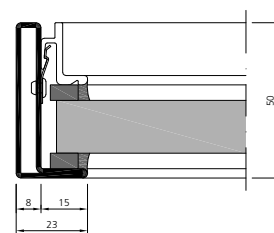
With their narrow face widths from 23 millimetres, the single-leaf or double-leaf doors in the forster presto xs system are sure to catch the eye in any room. Ductile profiles make this elegant steel system particularly versatile – whether for use in sophisticated residential construction or for renovations in line with requirements for listed buildings.

The recyclable system made from 100% steel also has a lot to offer in terms of functionality – it impresses with a low structural depth and sound insulation values of up to 35 dB. Barrier-free anti-panic doors in sizes of up to 1200 x 2400 millimetres can be implemented for escape and emergency routes. forster presto xs therefore represents the perfect blend of form and functionality.

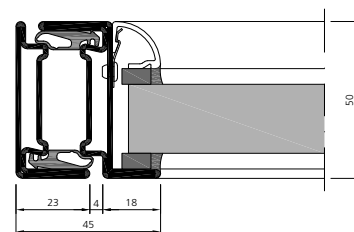


### Your benefits

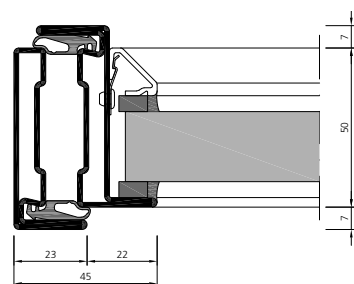
- Extremely narrow face widths
- Flush and recessed versions
- High freedom of design



Fixed glazing



Flush door



Recessed door

				
Low carbon emission steel	EPD	Slim profiles	Barrier-free	Acoustic performance

## Technical specifications

### Standard door

#### Material variants

Available as CO<sub>2</sub>-reduced low carbon emission steel  
Bright steel  
Steel zinc magnesium

#### Face widths

Door leaf with frame from 45 mm  
Fixed glazing from 23 mm  
Flush and recessed versions

#### Dimensions

Inside width single-leaf (W×H): max. 1200 × 2400 mm  
Inside width double-leaf (W×H): max. 2400 × 2400 mm

#### Fittings

Attached fittings  
Max. leaf weight 120 kg

#### System features

Design variants:  
Side-hung door with single/double leaf, with optional sidelight and fanlight  
Fixed glazing  
Structural depth 50 mm/57 mm  
Max. filling element thickness 42 mm  
Glazing beads in aluminium and steel  
Wet and dry glazing  
Surface treatment with hot-dip galvanizing approved

#### Performance characteristics\*

Durability of self-closing properties: Class 6 according to EN 12400 (tested up to 200,000 cycles according to EN 1191)  
Doors for escape and emergency routes (partial and full panic) according to EN 179 and EN 1125  
Operating forces: Class 3 according to EN 12217  
Barrier-free according to DIN 18040  
Sound insulation up to  $R_w = 35$  dB according to EN ISO 140-3

### Fire-resistant door E30 / EW30 / E60 / EW60

#### Material variants

Available as CO<sub>2</sub>-reduced low carbon emission steel  
Bright steel  
Steel zinc magnesium

#### Face widths

Door leaf with frame from 45 mm  
Fixed glazing from 23 mm  
Flush and recessed versions

#### Dimensions

Inside width single-leaf (W×H): max. 1200 × 2400 mm  
Inside width double-leaf (W×H): max. 2400 × 2400 mm

#### Fittings

Attached fittings  
Max. leaf weight 120 kg

#### System features

Design variants:  
Side-hung door with single/double leaf, with optional sidelight and fanlight  
Fixed glazing  
Structural depth 50 mm  
Max. filling element thickness 42 mm  
Steel glazing beads  
Wet and dry glazing  
Surface treatment with hot-dip galvanizing approved

#### Performance characteristics\*

CE/UKCA marking according to EN 16034  
Durability of self-closing properties: Class 6 according to EN 12400 (tested up to 200,000 cycles according to EN 1191)  
Doors for escape and emergency routes (partial and full panic) according to EN 179 and EN 1125  
Operating forces: Class 3 according to EN 12217  
Barrier-free according to DIN 18040  
Sound insulation up to  $R_w = 35$  dB according to EN ISO 140-3

\* Take note of the country-specific approvals and requirements



# Pivot door with forster presto xs

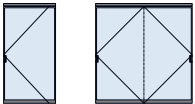
## Pivotal element in any room with minimalist design

An elegant indoor pivot door is the finishing touch for architecturally demanding buildings. The freely positionable single or double-leaf door with a pivot function of up to 360° is available with and without a hold-open. It can even be installed without a frame thanks to a bearing that is anchored in the ceiling and the floor.

The premium solution enables pivot doors to be constructed with a profile face width from 23 millimetres and leaf heights of up to 3000 millimetres. With a wide range of glazing beads and numerous other design options, the sky's the limit for planners when it comes to making particularly upmarket ideas for spaces a reality.

### Your benefits

- Extremely narrow face widths
- High freedom of design
- Frameless version



### Technical specifications

#### Standard door

##### Material variants

Available as CO<sub>2</sub>-reduced low carbon emission steel  
Bright steel

##### Face widths

Door leaf from 23 mm

Fixed glazing from 23 mm

Flush version

##### Dimensions

Inside width single-leaf (W×H): max. 2500 × 3000 mm

Inside width double-leaf (W×H): max. 5021 × 3000 mm

##### Fittings

Roller latch lock or version without lock

Door closer: corner installation or free positioning, optional leaf hold-open at 90°

Opening angle up to 150° or 360°

Max. leaf weight 200 kg

##### System features

Design variants:

Pivot door with single/double leaf, optionally with sidelight and fanlight, optionally with or without frame

Fixed glazing

Structural depth 50 mm

Max. filling element thickness 42 mm

Glazing beads in aluminium and steel

Wet and dry glazing

Surface treatment with hot-dip galvanizing approved

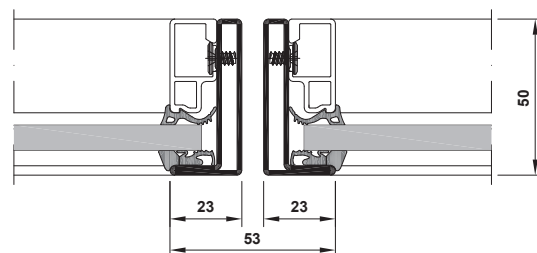
##### Performance characteristics\*

Durability of self-closing properties: Class 6 according to EN 12400 (tested up to 200,000 cycles according to EN 1191)

Barrier-free according to DIN 18040

Sound insulation up to  $R_w = 35$  dB according to EN ISO 140-3

\* Take note of the country-specific approvals and requirements



Transition between fixed glazing/door leaf



Low carbon  
emission steel



EPD



Slim  
profiles



Barrier-  
free

# Sliding doors with forster presto xs

## Lightness in motion

With our new sliding door, you can experience a solution that combines slim profile facings, stability and timeless design. The filigree construction enables maximum transparency and lightness and fits in elegantly with any room concept. This ensures a modern, streamlined look which connects the rooms with one another harmoniously.

The sliding door is versatile, ideal for office and living spaces where it offers flexible room solutions. It impresses with style and functionality in hotels, catering areas and public buildings. It is available with both manual and automatic operation and adapts flexibly to your requirements.

With its robust steel construction, durable materials and aesthetically clear design language, the new sliding door creates rooms which are full of style and lightness.

### Your benefits

- Extremely narrow face widths
- High freedom of design
- Automatic and manually operated sliding doors



### Technical specifications

#### Availability

System solution forster presto xs sliding door is available from Q2/2025  
Customised solution on request

#### Material variants

Available as CO<sub>2</sub>-reduced low carbon emission steel  
Bright steel

#### Face widths

Leaf from 23 mm

Fixed glazing from 23 mm

#### Dimensions

Inside width, 1-leaf (WxH): 2000 x 3000 mm

Inside width, 2-leaf (WxH): 3000 x 3000 mm

#### Fittings

Electric drive motors or manual operation

Barrier-free and low-noise floor guide

Brush for easy assembly, adjustment and maintenance

#### System features

Design variants:

1/2-leaf, optionally with sidelight and fanlight

Fixed glazing

Structural depth 50 mm

Glazing beads in aluminium and steel

Wet and dry glazing

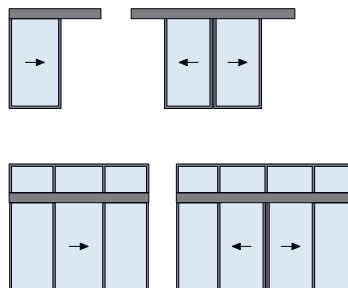
#### Performance characteristics\*

Durability of self-closing properties: Class 6 according to EN 12400  
(tested up to 200,000 cycles according to EN 1191)

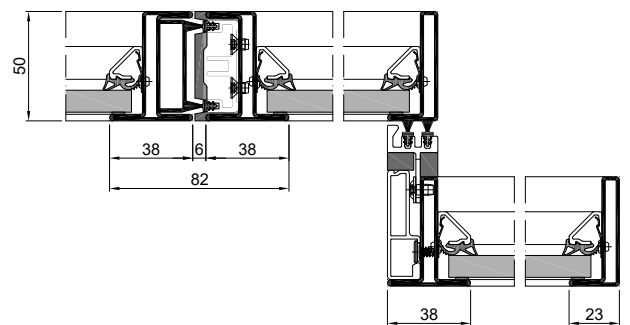
Barrier-free according to DIN 18040

Air permeability according to EN 12207 Class C

Sound insulation up to  $R_w = 28$  dB according to EN ISO 140-3







Transition between fixed glazing/door leaf

## Reference projects with the slim forster presto xs profile system

Our reference projects with forster presto xs illustrate the system's versatility in a wide range of applications. Whether in modern office buildings, exclusive residential buildings or in historical renovations – the filigree side-hung, pivot and sliding doors fit in perfectly with any architecture. With a face width of just 23 millime-

tres, the doors offer a minimalistic design, ensure the interior is flooded with daylight and provide a feeling of spaciousness. The system impresses in various room solutions both in terms of functionality and aesthetics and is durable and particularly sustainable due to the use of 100% recyclable steel.



*Merkle Metallbau, Trimmis, Switzerland  
Image: Roider Fotografie*



*Haus Welper, Germany  
Image: Jens Kirchner*

*Forster trade fair stand  
Image: Forster Profile Systems Ltd*



*Forster Campus, Romanshorn, Switzerland  
Images: Forster Profile Systems Ltd*

# Steel is our nature.

**For us, steel is a matter of the heart. We develop long-lasting systems for attractive and energy-efficient architecture.**

Forster Profile Systems develops and manufactures safe, energy-efficient solutions in steel and stainless steel for doors, windows and facades in Switzerland. Forster works with its own branches in over 20 countries – and exclusive sales partners in around 10 more. In-house consultants are on hand to assist our customers at sites ranging from Europe and the Middle East to Asia and North America. Forster systems are used for building shells and interiors. This includes market-leading solutions that meet

the strictest requirements and standards in terms of thermal insulation, plus safety applications such as fire protection, burglar resistance and bullet resistance. The product range is rounded off by matching accessories. Our customers and business partners in architecture, planning and construction can also count on comprehensive services for their respective industry.

Forster Profilsysteme AG | CH-8590 Romanshorn  
[info@forstersystems.com](mailto:info@forstersystems.com) | [forstersystems.com](http://forstersystems.com)

**forster**

**forsterprestoxs**

