

BULLET PROTECTION: FIXED WINDOWS

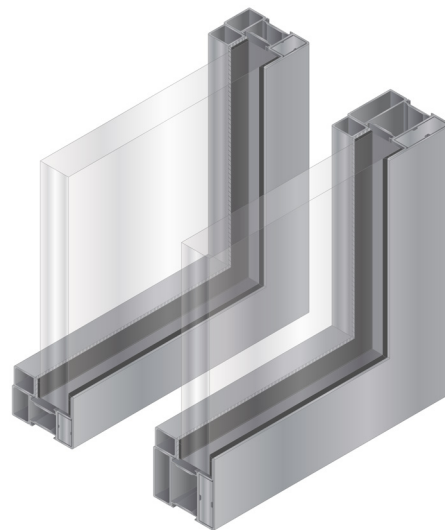
RATING: EN 1522 for FB4, AS/NZS 2343:1997 for G2 protection

SYSTEM: TPS-Forster Unico Steel Framing system



Incorporating the TPS-Forster Unico Steel Framing system with certified ballistic resistant glass, these windows have been tested and approved to EN 1522 for FB4, as well as AS/NZS 2343:1997 for G2 protection.

Highly suited for applications that require windows which have certified resistance against hand gun attack up to G2 rating, such as protective services buildings (police, security guards, etc), embassies, cash offices, banks, airports and other high security buildings.



FEATURES

- Fixed windows up to 2400 x 1200 for each lite (larger sizes possible on request)
- Fully certified to AS/NZS 2343:1997, G2 (which includes G0 and G1)
- Fully certified to EN 1522, FB4
- Single and multi-panel applications
- Standard U-Series with 50mm profile and 70mm sightline
- Slimline U-Series with 30mm profile and 50mm sightline
- Optional R2 glass upgrade possible (glass only)
- Available in powdercoat, paint finish, or 304 grade Stainless Steel finish
- Easily integrated with TPS U-Series G2 rated glass bullet resistant door assemblies
- Excellent U-values achieved by framework
- Also available with -/60/60 rating to AS1530.4



TECHNICAL DATA

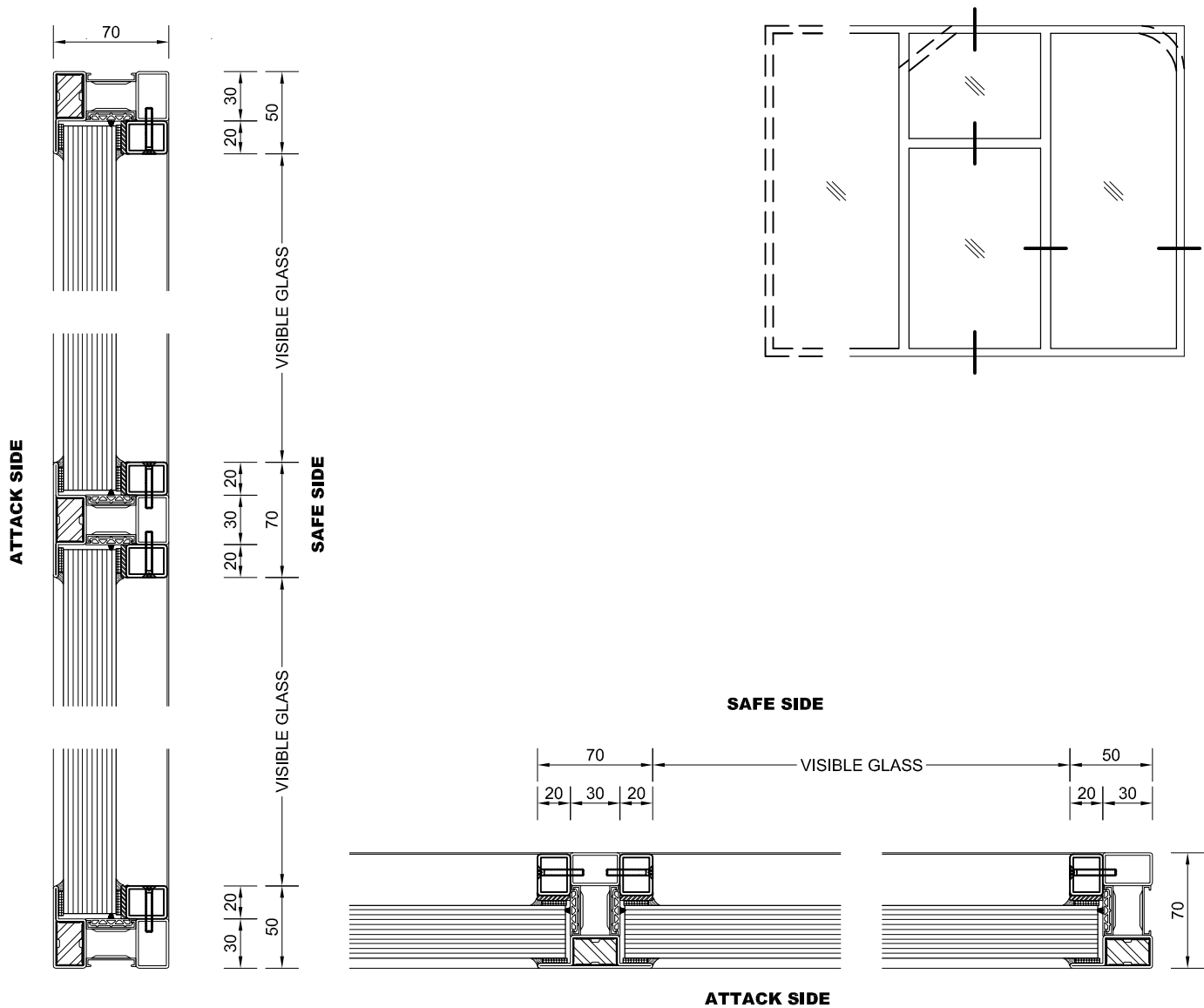
Glass	Thickness	FRL	Application	Max visible glass dim (mm)	Max glass pane area (m2)	Weight (Kg/m2)
G2 Ballistic	30-40mm	up to -/60/60	Internal / external	+2376	+2.8m2	Varies

HOW TO SPECIFY

Glazing to be fully certified TPS G2 ballistic window incorporating G2 ballistic glazing with Forster Unico Steel framing system, available via Technical Protection Systems approved distribution network.

Contact Technical Protection Systems Pty Ltd for further information:
W technicalprotection.com.au P 03 9720 1930 E info@technicalprotection.com.au

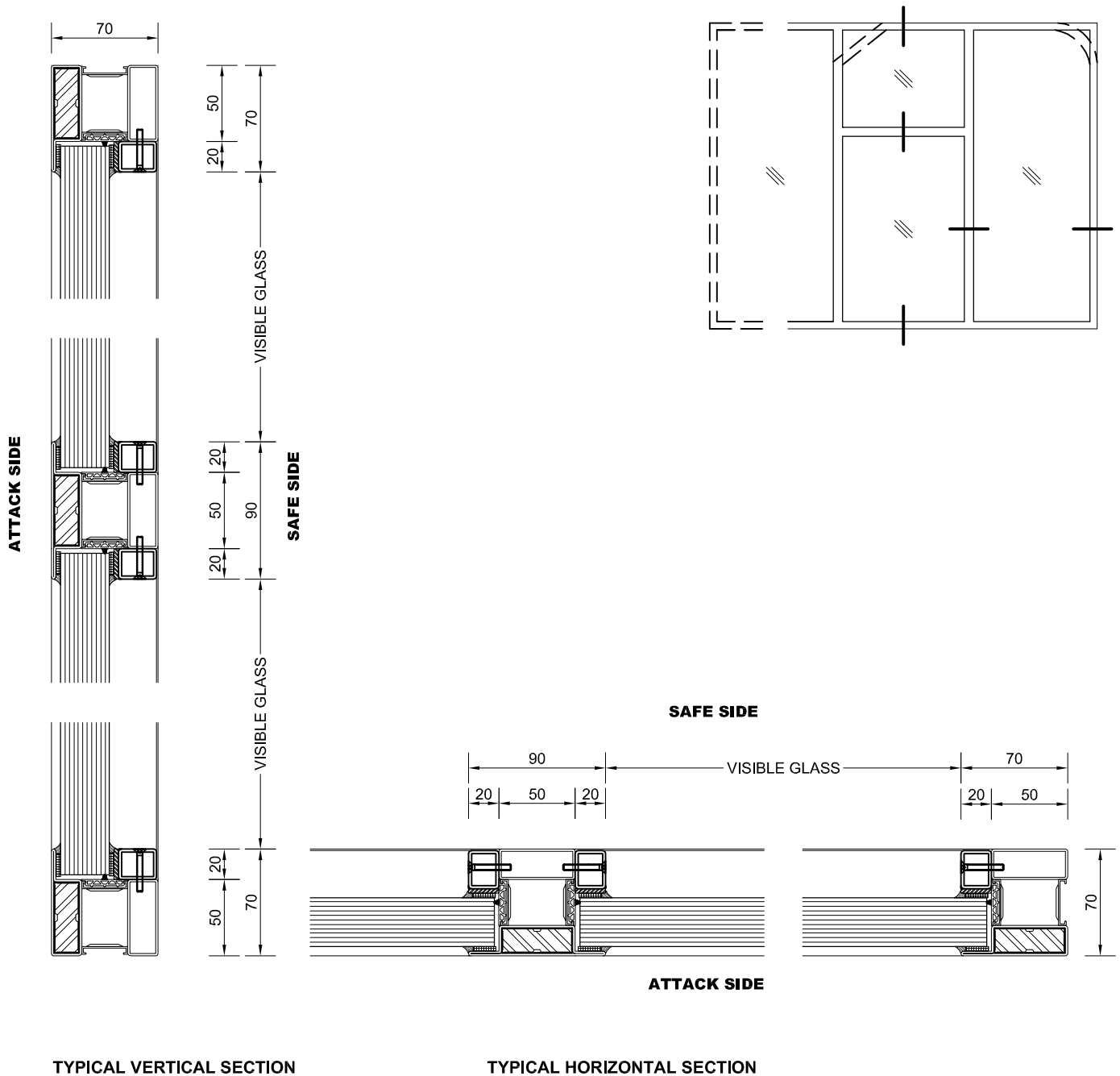
G2 BALLISTIC WINDOW SECTIONS (30mm)



TYPICAL VERTICAL SECTION

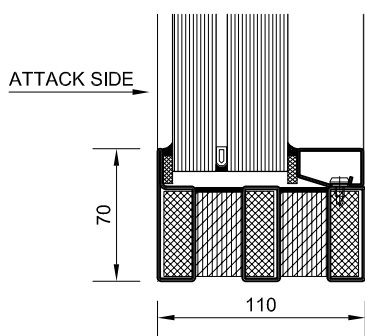
TYPICAL HORIZONTAL SECTION

G2 BALLISTIC WINDOW SECTIONS (50mm)

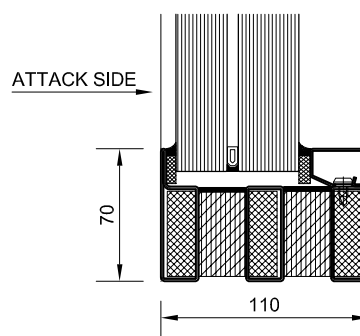




G2 + -/60/60 OPTION



-/60/60 + G2 BALLISTIC INTERNAL
PS60-101 23mm Pilkington Pyrostop®
+ 32mm Nom. G2 laminated glass



-/60/60 + G2 BALLISTIC EXTERNAL
PS60-201 27mm Pilkington Pyrostop®
+ 32mm Nom. G2 laminated glass

Note: -/60/60 + G2 options are certified to AS1530.4 + AS2343. Installation details to achieve G2 must be determined and agreed by client. Glass sizes and configurations are restricted (typically 2400 x 1200 per pane), but other sizes may be possible. Please contact Technical Protection Systems for assistance with your particular project requirements.



G2 BALLISTIC WINDOW WALL ABUTMENTS

